

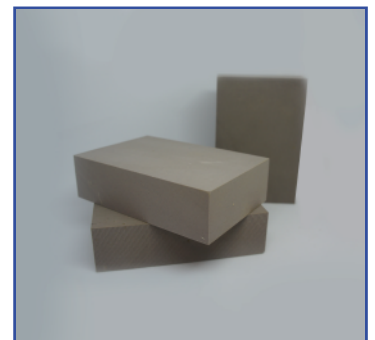


## Armatherm™ 500

Armatherm™ 500 is a high strength, polyurethane material made in several densities to support a wide range of loading conditions. Due to its closed cell structure, it does not absorb water or moisture and has limited creep under continuous load.

Armatherm™ 500 is manufactured in 4' x 8' sheets with our standard thicknesses at 1/2", 1" and 2" thick. Armatherm™ 500 sheets can be bonded together to satisfy U value and thickness specification requirements. Armatherm™ 500 can be used anywhere a penetration or transition exists in the building envelope creating a thermal bridge. Solutions using Armatherm™ 500 to minimize heat loss include:

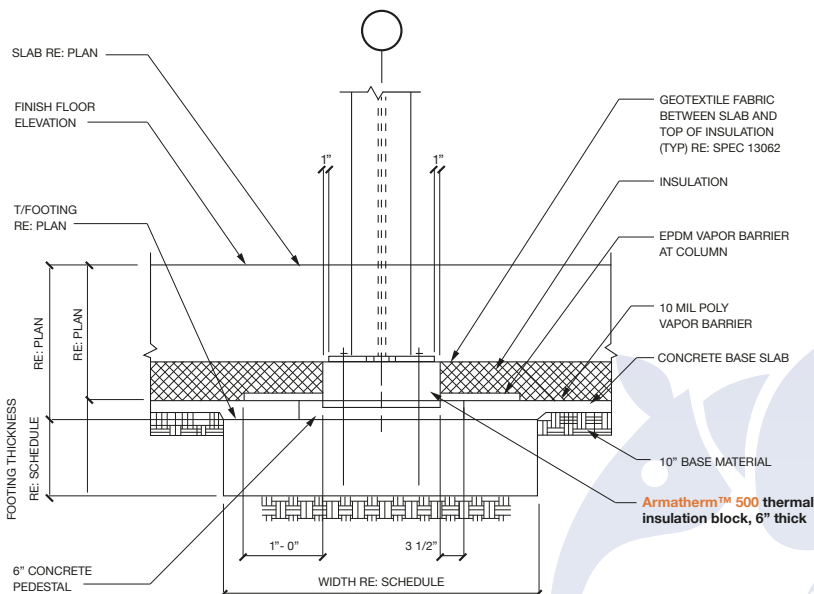
- Parapets
- Slab/floor edge
- Column base
- Roof penetrations
- Custom windowsills
- Roof edge
- Slab to foundation
- Foundation to wall
- Concrete balconies
- Custom moulding for over-insulating



Armatherm™ 500

### Specifications of Armatherm™ 500

	500-080	500-150	500-200	500-280
Compressive Stress (psi)	210	560	1100	2150
Compressive Modulus (psi)	6155	18,130	29,000	49,300
Thermal Conductivity (BTU in/hr ft² F)	0.26	0.32	0.39	0.53
R value per inch	3.85	3.1	2.6	1.9
Operating Temperature	-300F/+175F	-300F/+175F	-300F/+175F	-300F/+175F



### Related Accesories:

- Armatherm™ Thermal Washers and Bushing





www.armatherm.com

# Product Submittal Sheet

## Project Information

Project Name:

Address:

---

## Contractor Information

Name:

Contact:

Phone:

Fax:

---

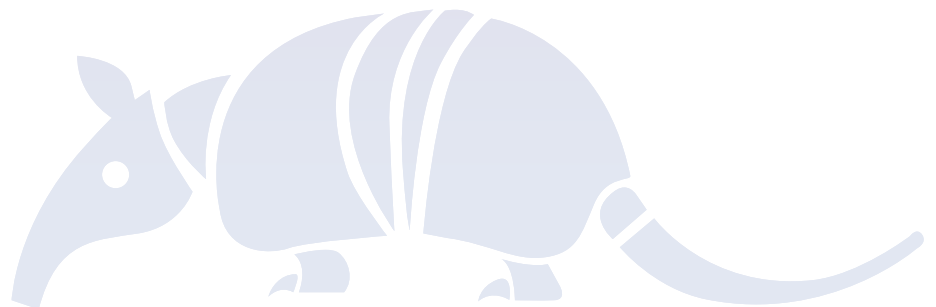
## Architect Information

Name:

Contact:

Phone:

Fax:



Call **844 360 1036** For all enquiries

1 Titleist Drive  
Acushnet, MA 02743

armatherm.com  
 sales@armatherm.com